



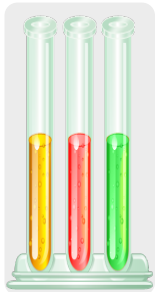
PARENT INFORMATION NIGHT

KM S-Grade 7 to 8

I. Requirements



- Math (Math 8, Algebra, & Geometry (H.S.))
- ELA (ELA and Honors ELA)
- Science (Science 8 and Honors Science 8)
- Social Studies
- Technology Embedded Curriculum
- Content Literacy Strategies



Math



- Algebra I or Geometry may be recommended (Sequenced Courses)
- Both are for KHS Credit
- KHS Transcript and GPA are Affected

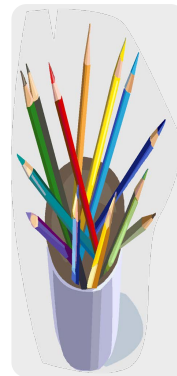


II. Rotation or World Lang.



Rotation

- 6 Week Rotations
 - ELA / Math / Environmental Science
 - More contact time working on skills - secondary curriculum
 - Content Related
 - Exploration = Real World
Application = Fun and Engaging
 - Cross Curricular Correlation
- Physical Education
 - Indoor / Outdoor Curriculum
 - High School Credit
 - Highly active



World Language

- French 1
- Spanish 1
 - Curriculum Intense
 - High Achieving ELA students
 - Sometimes a difficult transition
 - Must meet specific criteria
 - Availability based on KHS enrollment and Faculty

World Language

Bonjour



- French I & Spanish I
- In place of Gym and Rotation
- These are for KHS Credit and appear on the KHS Transcript
- Must qualify to have the option
 - Advance (5) or Accelerated (4) score on ELA AIR (State) Assessment
 - Summative Assessment Review
 - All A's and B's in Honor ELA 7 or all A's in regular ELA 7

Gracias

III. Music or Tech/Art



Music

- Choir – Mrs. Adkins (Full year)
 - H.S. Credit Possibility (Choir)
- Band – Mr. Dingeldein (Full year)
 - Marching Band Tryouts (Study Hall)
 - Flag Corps / Twirlers (Study Hall)

Art / Technology

- Art – Mrs. Camburako
- Technology / Media Production
 - 1 semester (2 nine week quarters) of Each
 - Great compliment with our 1 to 1 technology initiative
 - Production Lab
 - New Technology



Other

- Lunch / REC
- Advisory - Clubs / Class Meetings
- After school tutoring
 - Math
 - ELA
- Summer Reading List (All students)



Advisory Period

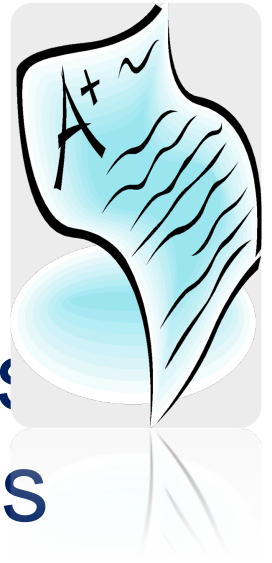


- Week at a Glance for Work Load
- Testing
- RED Zone (Read Every Day = Choice Books)
- Study Hall
- Planned Close Reading
- Intervention and Enrichment
- School Wide Programming (PBIS)
- Computer Lab
- Exploratory Class opportunities

If Seeking KHS Credit in 8th Grade



- Students are cross-enrolled with KHS
- KHS Transcript reflects these courses
- KHS Cumulative GPA is effected
- KHS Withdraw Policy Applies
 - Can drop within first 10 days without penalty



1 to 1 Technology



- Tool for LEARNING
- Technology Fee
- Acceptable Use Form
- Distribution – Week before School Opening
- Headphones
- Teacher Expectations
- Schoology and Embedded Google Suite

Schoology and Google Suite

- Learning Management System (LMS)
- Academic Content / Planning
- Sharing Folders with Teachers
- Immediate, Meaningful Feedback
- Calendar
- Courses / Assignments / Turn in Assignments
- Email and Notifications (Check Consistently)



Responsibilities as Learners

- Teachers vs. Students
- Taking more initiative / advocate
- Communicate
- Attitude towards Academics
- Effort towards Academics
- Focus on Academics
- Preparation for each class / materials
- Absent from school
- 1 to 1



Considerations



- Work Load and Impact on Grades
- Work Load and Impact on Stress
- Work Load and Impact on GPA
- The Standard K M S Curricula are still very rigorous and challenging (CCSS)



Recommended Course Form



██████████
Student Number: ██████████

Grade: 08

Dear Parent and/or Guardian:

Please review your child's courses for next year. Sign below and return to the KMS office. If you have any questions or concerns, e-mail Mr. Bell at greg.bell@kirtlandschools.org or call 256-3358 ext 3002. Thank you.

Required Courses:

ADV800 ADVISORY 8
MCH800 CHOIR 8
ELA008 ELA ROTATION 8
RDG800 ENGLISH LANGUAGE ARTS 8
LUN800 LUNCH 8
MAT800 MATH 8
MATH08 MATH ROTATION 8
WELL08 PHYSICAL EDUCATION
SCI800 SCIENCE 8
SCI008 SCIENCE ROTATION 8
SOC800 SOCIAL STUDIES 8

Courses with program priority displayed in bold.

Parent/Guardian Signature _____ Date _____



Questions??



In Closing



- Please return the pre-scheduling sheet with your student's label to the KMS Office ASAP (Due by Friday, March 4th). Those not returning this form will be placed in elective based on numbers.



You may turn in your registration tonight if you wish.

In Closing - Continued



- If you have questions about final course selections, call or e-mail:
 - Scott Am stutz (scott.amstutz@kirtlandschools.org)
 - Greg Bell (greg.bell@kirtlandschools.org)
- An actual schedule will not be available late Spring
- This Power Point Presentation will be posted on the KMS Web Site



In Closing - Continued



- If you have questions about final course selections, call or e-mail:
 - Scott Am stutz
(scott.amstutz@kirtlandschools.org)
 - Greg Bell
(greg.bell@kirtlandschools.org)
- An actual class schedule will not be available until late Spring
- This Power Point Presentation will be posted on the KM S W eb Site

